

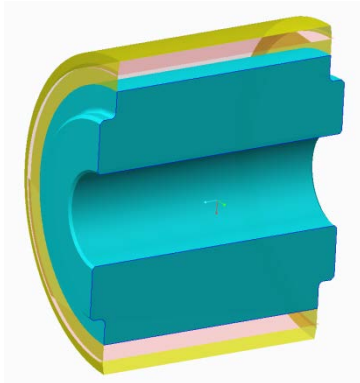


[Theory](#) – [Procedure](#) – [Demonstration](#)

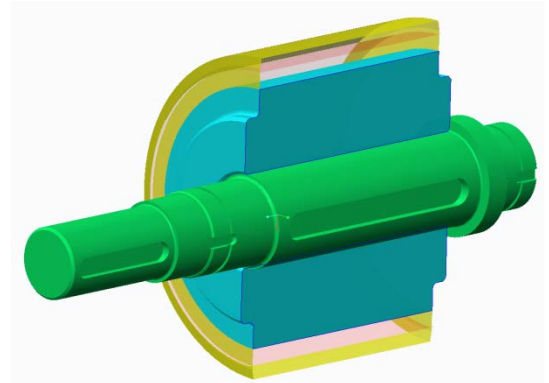
Shaft Instruction

TEORIJSKE OSNOVE

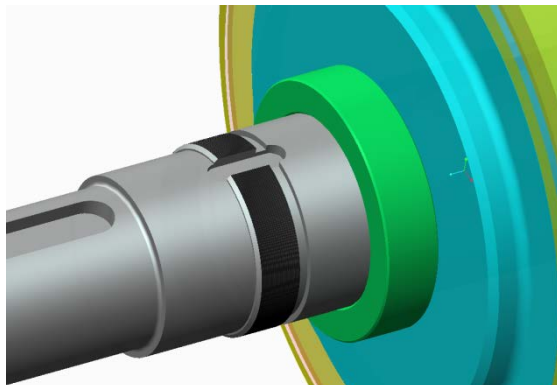
1. Proces montaže podsklopa vratila i zupčanika



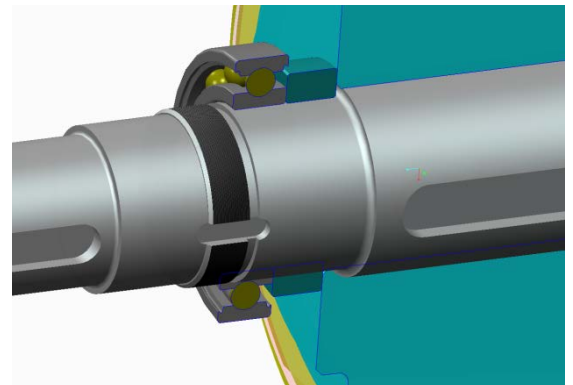
Step 1 - Zupčanik



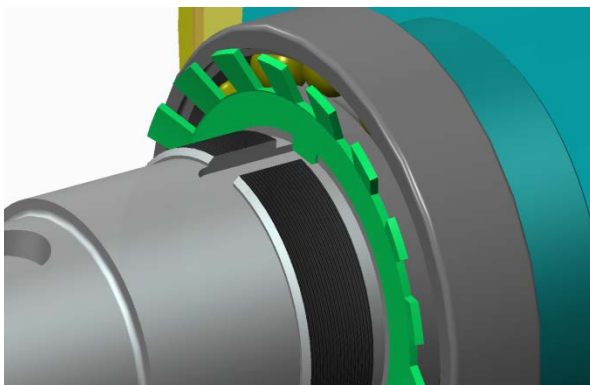
Step 2 - Vratilo



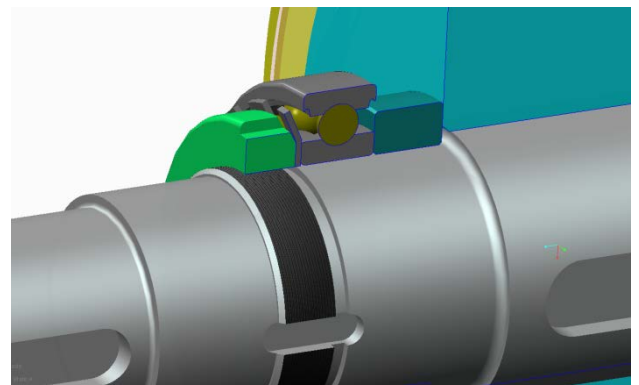
Step 3 – Distanc Čahura



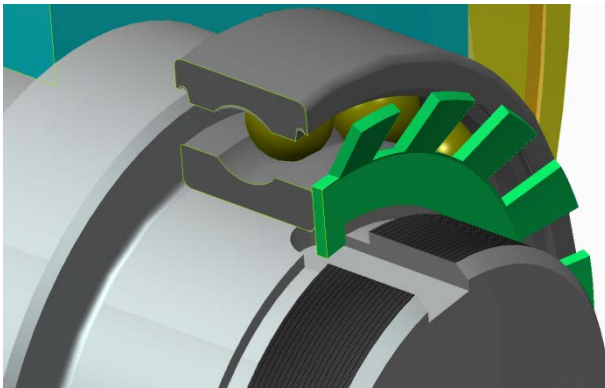
Step 4 – Ležaj u osloncima A i B



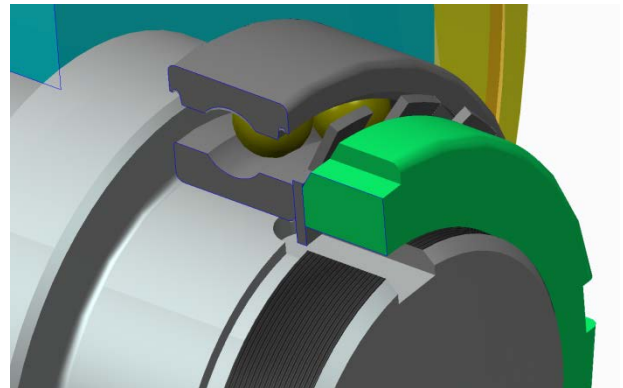
Step 5 – Osiguravajuća Podloška MB u Osloncu A



Step 6 – Osiguravajuća Navrtka KM u Osloncu A

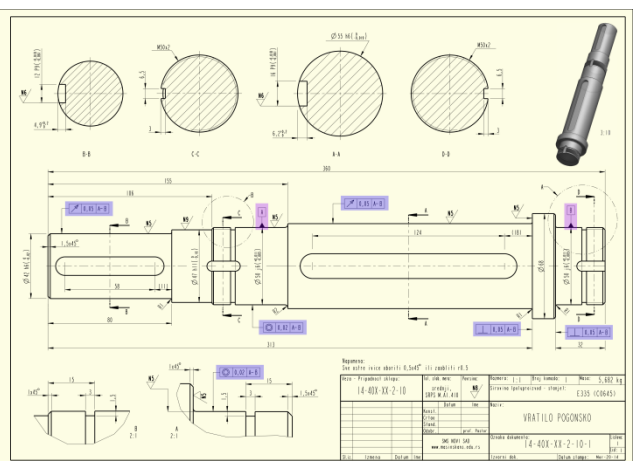
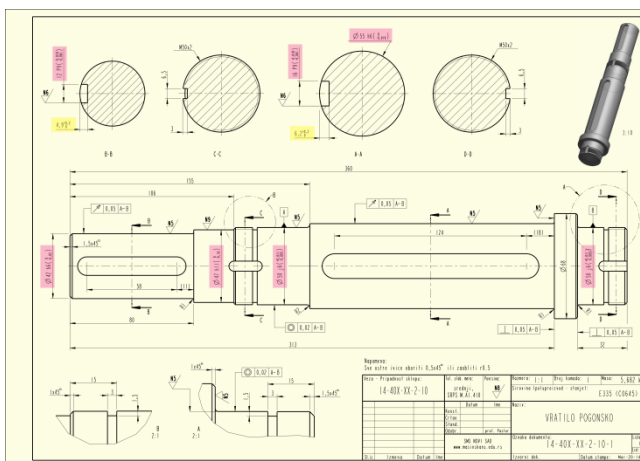
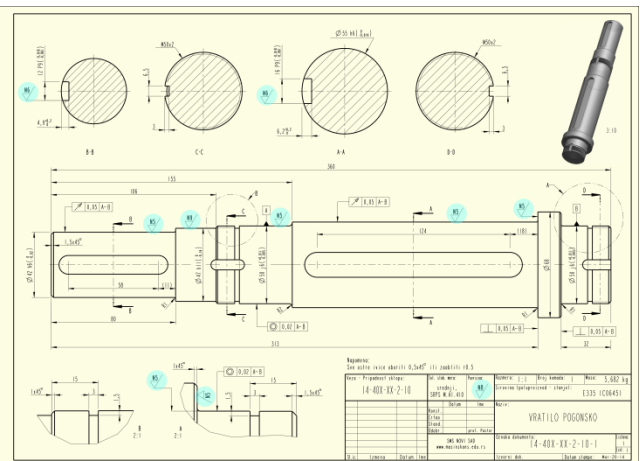
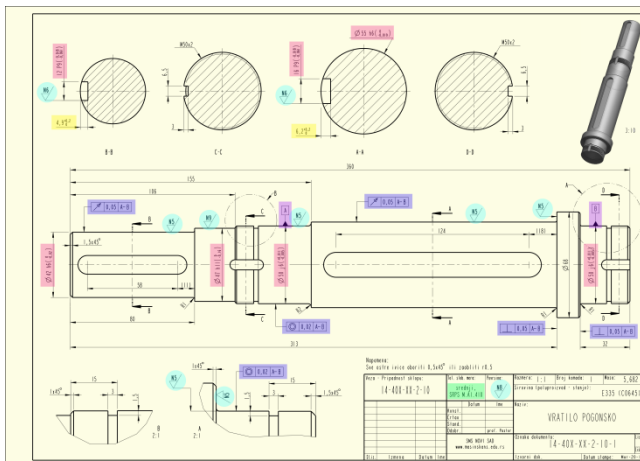


Step 7 – Osiguravajuća Podloška MB u Osloncu B



Step 8 – Osiguravajuća Navrtka KM u Osloncu B

2. Tehnički crtež vratila [link](#)





3. Parametrizacija vratila

Cilj – Srednja ravan zupčenja na sredini između oslonaca A i B

